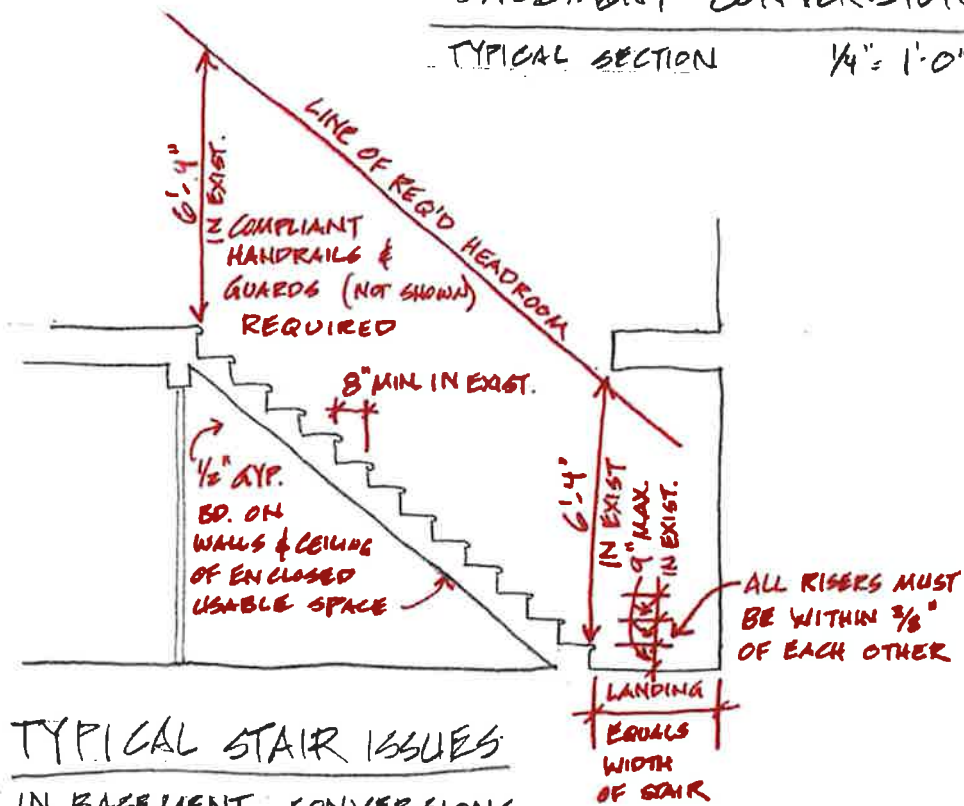


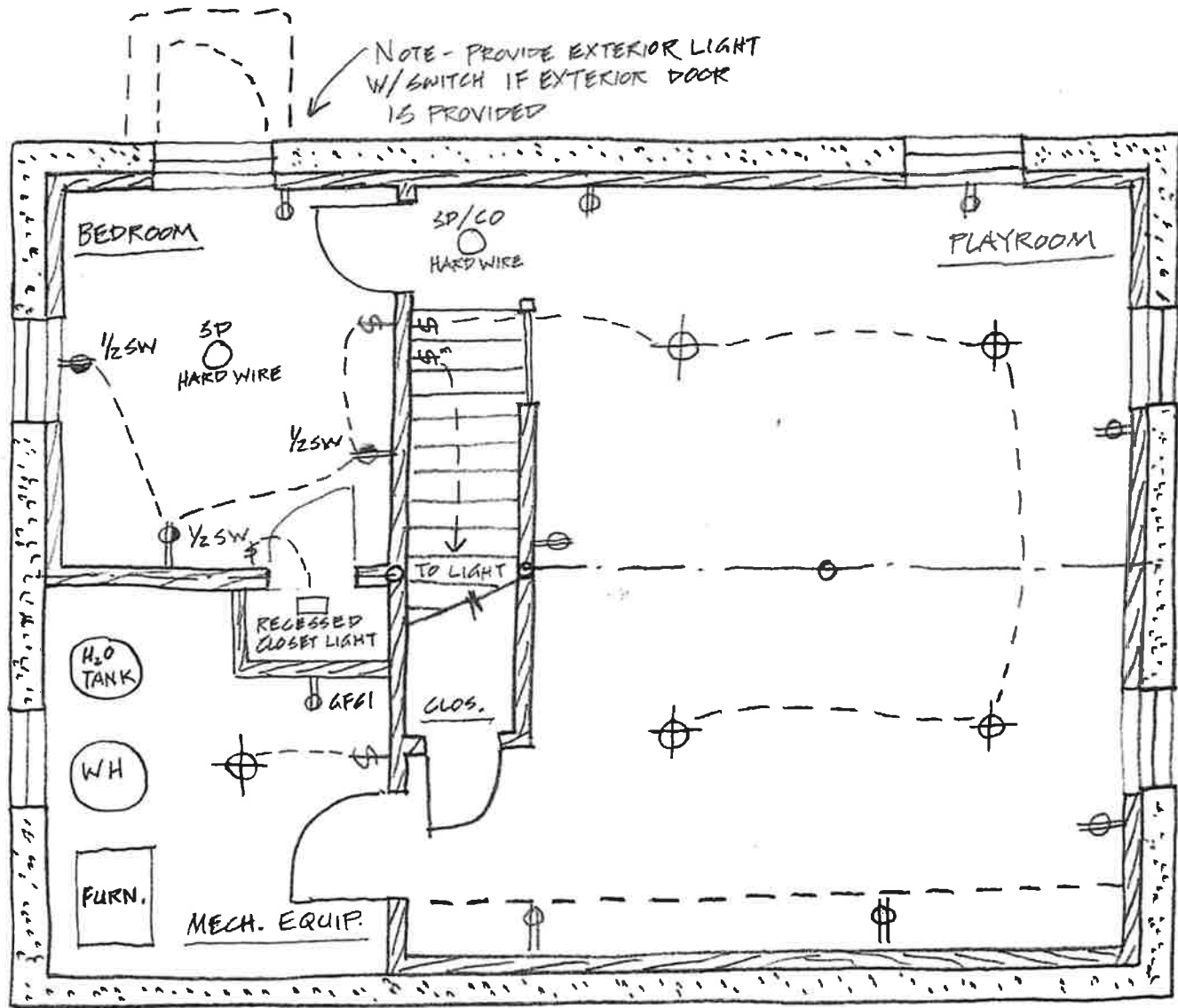
BASEMENT CONVERSION

TYPICAL SECTION

$\frac{1}{4}'' = 1'-0'' \pm$



TYPICAL STAIR ISSUES
IN BASEMENT CONVERSIONS



NOTE - ADD BATTERY POWERED
SMOKE & CO DETECTORS IN LOCATIONS
REQ'D. BY CODE THROUGHOUT HOUSE WHERE
NONE EXIST.

BASEMENT ELEC. PLAN 1
123 MAIN ST. ANYTOWN CT.